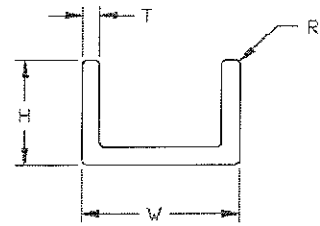
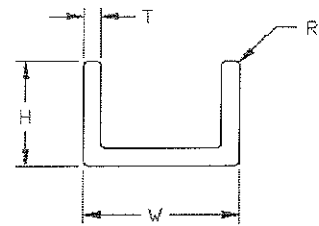


Common Channel Profiles



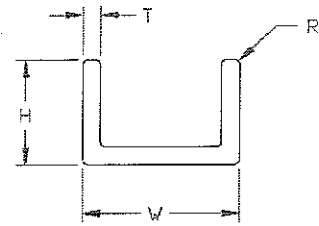
Ref. #	W	H	T	R	Comments:
387	0.250	0.300	0.085	0.015	
388	0.268	0.375	0.050	0.015	
389	0.304	0.500	0.050	0.008	Ends Tapered
390	0.310	0.630	0.055	0.015	
391	0.371	0.750	0.053	0.015	
392	0.374	0.625	0.062	0.010	
393	0.375	0.375	0.062	0.010	
394	0.394	0.562	0.062	0.015	Full R @ ends
395	0.405	0.500	0.050	0.010	
396	0.427	0.382	0.062	0.010	
398	0.465	0.375	0.045	0.010	
399	0.480	0.275	0.075	0.015	
405	0.500	1.250	0.080	0.015	
404	0.500	1.000	0.080	0.015	
403	0.500	1.125	0.000	0.010	B0.080 / L0.075
401	0.500	0.500	0.000	0.020	B0.020 / L0.093
402	0.500	1.062	0.000	0.015	B0.082 / L0.094
406	0.524	0.500	0.062	0.010	
407	0.563	0.563	0.050	0.015	
408	0.594	0.062	0.080	0.060	Walls Tapered
409	0.625	0.180	0.000	0.015	B0.072 / L0.100
410	0.625	0.750	0.055	0.015	V-groove present
411	0.625	0.225	0.000	0.015	B0.075 / L0.050
412	0.625	0.625	0.062	0.015	
413	0.651	0.438	0.063	0.015	
415	0.656	1.000	0.062	0.010	
416	0.672	1.000	0.078	0.020	Legs taper in by .5 deg.
417	0.720	1.380	0.125	0.010	V-groove present

Common Channel Profiles



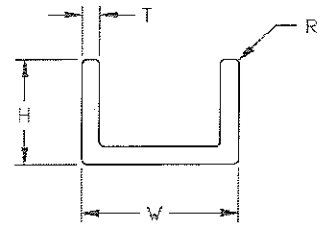
Ref. #	W	H	T	R	Comments
426	0.750	0.500	0.062	0.000	
418	0.750	0.500	0.093	0.015	
419	0.750	0.375	0.125	0.031	
420	0.750	0.625	0.125	0.010	
421	0.750	0.750	0.125	0.015	
422	0.750	1.250	0.094	0.010	
423	0.750	0.750	0.045	0.010	
424	0.750	0.438	0.094	0.010	
425	0.750	0.284	0.108	0.000	ID
427	0.762	0.750	0.060	0.015	
428	0.770	0.330	0.126	0.122	ID
429	0.830	1.030	0.040	0.030	
430	0.874	0.625	0.062	0.010	
432	0.875	0.790	0.040	0.010	
433	0.886	0.750	0.060	0.016	
458	0.938	1.250	0.125	0.025	ID Mark Present - Rounded tips
435	0.942	0.000	0.000	0.015	0.925 / 0.800
436	0.954	0.750	0.094	0.016	
444	1.000	0.750	0.090	0.000	
440	1.000	1.250	0.080	0.010	
446	1.000	1.130	0.125	0.000	
445	1.000	0.174	0.100	0.052	Unequal walls
439	1.000	0.500	0.125	0.015	
441	1.000	1.250	0.093	0.015	
443	1.000	0.890	0.040	0.030	
447	1.100	1.000	0.055	0.015	
442	1.100	0.312	0.060	0.010	
448	1.120	1.220	0.000	0.015	B0.220 / L0.060

Common Channel Profiles



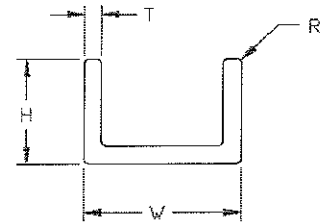
Ref. #	W	H	T	R	Comments
450	1.125	3.125	0.063	0.100	
451	1.126	0.500	0.063	0.010	
452	1.130	0.550	0.055	0.000	
453	1.144	1.500	0.062	0.010	
455	1.190	3.190	0.075	0.125	
454	1.190	0.560	0.060	0.010	
456	1.200	1.300	0.000	0.010	0.350 / 0.400
457	1.230	0.130	0.050	0.010	
459	1.235	1.140	0.000	0.015	B0.070 / L0.060
460	1.240	1.421	0.060	0.100	
462	1.250	3.500	0.000	0.015	B0.500 / L0.375
463	1.250	1.250	0.125	0.015	Legs Chamfered
464	1.250	0.750	0.125	0.010	
467	1.268	1.000	0.000	0.015	B0.300 / L0.100
465	1.268	1.625	0.000	0.015	B0.125 / L0.100
466	1.268	1.250	0.000	0.015	B0.250 / L0.100
468	1.275	1.190	0.090	0.015	
469	1.280	0.750	0.125	0.030	
470	1.285	0.125	0.040	0.000	
471	1.406	1.500	0.188	0.220	Full R @ ends/R0.032 inside
472	1.420	0.500	0.212	0.125	Uneven walls and ID
473	1.440	1.625	0.125	0.010	
474	1.450	2.350	0.100	0.015	
475	1.450	3.225	0.100	0.015	
476	1.479	0.359	0.050	0.010	
477	1.490	1.000	0.125	0.015	Legs Chamfered
478	1.500	0.205	0.000	0.010	B0.125 / L0.080
483	1.500	1.000	0.062	0.015	

Common Channel Profiles



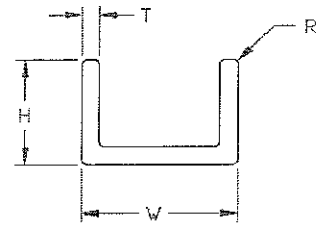
Ref. #	W	H	T	R	Comments
482	1.500	1.000	0.125	0.015	
481	1.500	1.500	0.188	0.010	
479	1.500	1.500	0.125	0.015	
480	1.500	0.625	0.062	0.015	
484	1.525	1.875	0.125	0.015	
485	1.550	2.350	0.100	0.015	
486	1.575	1.969	0.075	0.015	2 Grooves
487	1.630	1.720	0.000	0.015	B0.220 / L0.065
488	1.634	1.000	0.062	0.015	
489	1.636	2.150	0.312	0.015	
490	1.705	2.605	0.072	0.125	
491	1.708	0.358	0.098	0.015	
492	1.749	0.990	0.187	0.187	
494	1.750	1.250	0.188	0.010	
495	1.750	0.790	0.040	0.015	
496	1.750	0.750	0.250	0.030	
497	1.750	1.000	0.250	0.030	
498	1.750	1.750	0.250	0.030	
499	1.750	1.510	0.075	0.090	
500	1.754	1.750	0.120	0.010	
501	1.781	1.000	0.063	0.010	
502	1.788	0.750	0.040	0.015	
503	1.800	0.837	0.080	0.015	
504	1.814	2.000	0.063	0.015	
505	1.940	1.500	0.250	0.000	ID
507	2.000	1.000	0.125	0.016	
508	2.000	0.680	0.000	0.015	B0.150 / L0.300
509	2.000	1.000	0.000	0.030	B0.250 / L0.375

Common Channel Profiles



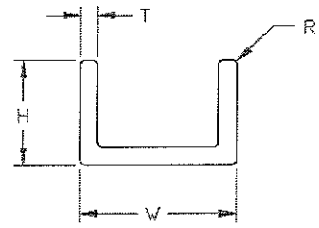
Ref. #	W	H	T	R	Comments
510	2.000	1.750	0.000	0.030	B0.250 / L0.375
511	2.040	1.000	0.045	0.015	
512	2.086	1.480	0.043	0.016	
513	2.114	0.549	0.049	0.000	
515	2.126	2.000	0.063	0.015	
516	2.140	1.000	0.050	0.015	
517	2.150	0.125	0.125	0.020	
518	2.235	1.500	0.000	0.000	3 "V" Grooves - 0.188 / .150 walls
520	2.250	1.125	0.000	0.000	B0.100 / L0.125
521	2.250	1.000	0.000	0.020	B0.125 / L0.145
522	2.250	2.500	0.188	0.015	Legs Chamfered
523	2.250	1.375	0.188	0.015	Legs Chamfered
524	2.250	1.970	0.188	0.015	Legs Chamfered
525	2.250	1.000	0.125	0.000	
526	2.250	1.970	0.188	0.000	Chamfered ends
527	2.312	1.000	0.156	0.015	
528	2.370	1.125	0.250	0.000	
531	2.500	1.195	0.094	0.010	
532	2.500	1.250	0.188	0.000	V-Groove present
530	2.500	1.500	0.120	0.015	
533	2.525	0.800	0.050	0.015	
534	2.605	2.605	0.072	0.015	
535	2.625	0.500	0.050	0.015	
537	2.700	1.375	0.187	0.015	4 Ribs
538	2.750	1.125	0.187	0.015	
539	2.750	2.750	0.290	0.015	
540	2.750	1.500	0.250	0.030	Web thk. 0.125
541	2.750	1.392	0.090	0.050	Uneven walls, ID and radius tips

Common Channel Profiles



Ref. #	W	H	T	R	Comments
542	2.975	1.488	0.050	0.000	
548	3.000	0.870	0.125	0.015	
550	3.000	1.250	0.188	0.000	V-Groove present
549	3.000	1.500	0.175	0.000	
545	3.000	1.375	0.230	0.015	Corners Chamfered
546	3.000	2.630	0.250	0.015	Legs Chamfered
547	3.000	1.375	0.230	0.015	Corners Chamfered
551	3.062	1.813	0.375	0.031	Ribs on Inside of 1 Leg
552	3.127	1.500	0.050	0.015	
554	3.232	2.889	0.343	0.000	Grooves
561	3.500	3.000	0.313	0.000	ID and indent
555	3.500	2.250	0.188	0.015	Legs Chamfered
556	3.500	1.375	0.195	0.015	Legs Chamfered
557	3.500	2.250	0.250	0.015	Legs Chamfered
558	3.500	1.375	0.250	0.015	Legs Chamfered
559	3.500	3.000	0.250	0.015	Legs Chamfered
560	3.500	2.250	0.250	0.015	Legs Chamfered
562	3.580	1.000	0.040	0.015	
563	3.700	1.300	0.130	0.015	
564	3.750	0.875	0.250	0.010	
565	3.782	1.219	0.281	0.010	
566	3.875	2.500	0.250	0.015	
567	3.885	1.800	0.320	0.187	Uneven walls
568	3.938	1.969	0.375	0.000	
569	3.968	1.813	0.188	0.000	
570	3.990	1.750	0.125	0.010	
578	4.000	1.500	0.125	0.015	w/inside corner relief's
580	4.000	1.580	0.180	0.000	

Common Channel Profiles



Ref. #	W	H	T	R	Comments:
581	4.000	2.250	0.250	0.000	
579	4.000	1.720	0.000	0.010	Structural Channel
576	4.000	1.580	0.180	0.015	
575	4.000	2.250	0.130	0.015	
573	4.000	2.000	0.250	0.015	
577	4.000	2.250	0.000	0.015	B0.190 / L0.290
574	4.000	1.580	0.180	0.015	Structural Channel
582	4.129	0.549	0.049	0.000	
583	4.500	1.500	0.200	0.000	
584	4.570	1.000	0.100	0.000	ID
585	4.755	0.500	0.050	0.015	
589	5.000	0.000	0.125	0.015	1.090 / 0.500
588	5.000	0.000	0.072	0.015	1.250 / 1.000
586	5.000	2.000	0.187	0.010	
587	5.000	2.750	0.343	0.015	
590	5.063	1.125	0.100	0.016	R0.125 (2 plcs.)
591	7.670	0.000	0.000	0.015	1.130 / 0.380
594	8.300	1.500	0.200	0.000	ID
595	9.656	1.780	0.200	0.000	ID
596	10.056	2.837	0.150	0.000	